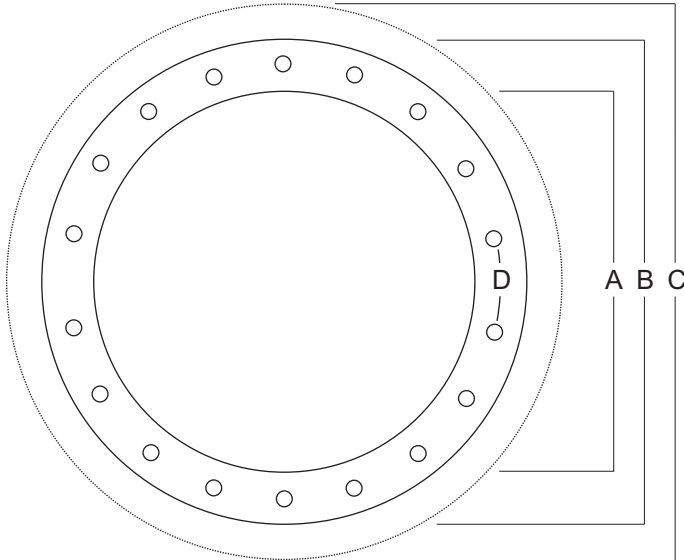


# Valley Nut and Bolt Co.

10111 Tilley Road South, Olympia, WA 98512-9143  
 800 562 8968 | 360 754 4877 | Fax: 360 357 9383  
 www.valleynutandbolt.com

# Flush Mount Circular Manhole Assembly

Plain view with bolting options. Not to scale. 08/2013



Round (flush mount)  
Standard Sizes\*

A	B	C
12.75	16.75	19.25
14.00	18.00	20.50
16.00	20.00	22.50
18.00	22.00	24.50
19.00	23.00	25.50
20.00	24.00	26.50
24.00	28.00	30.50
26.00	30.00	32.50

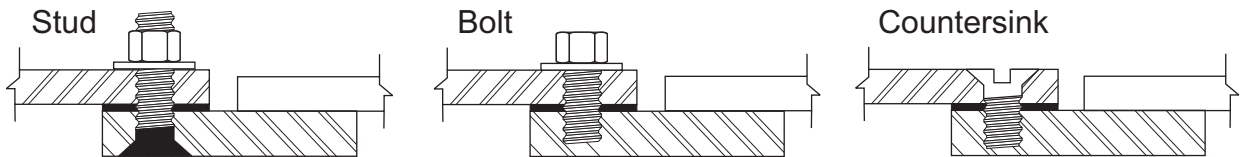
Clear opening = Interior (A).

D - Evenly spaced mounting holes  
(3-5/8" Max between holes)

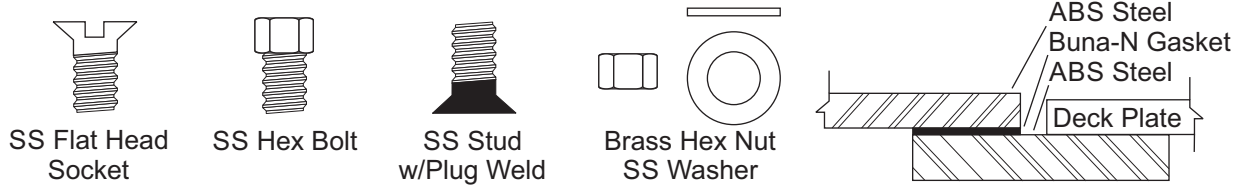
All dimensions in inches.

\*Custom sizes are available.

## Flush Mounting Options



## Mounting Materials

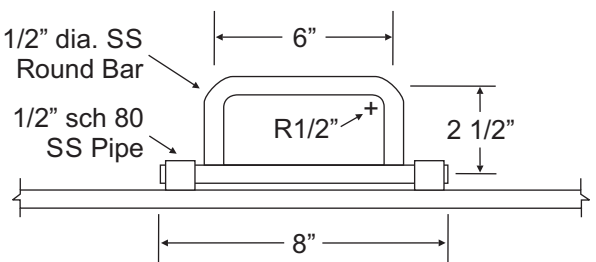


## Standard Options

Standard options include a stainless steel pipe fitting for the cover and a drop flop handle. Contact us for custom options.

Drop Flop  
Handle

1/2" dia. SS  
Round Bar  
1/2" sch 80  
SS Pipe

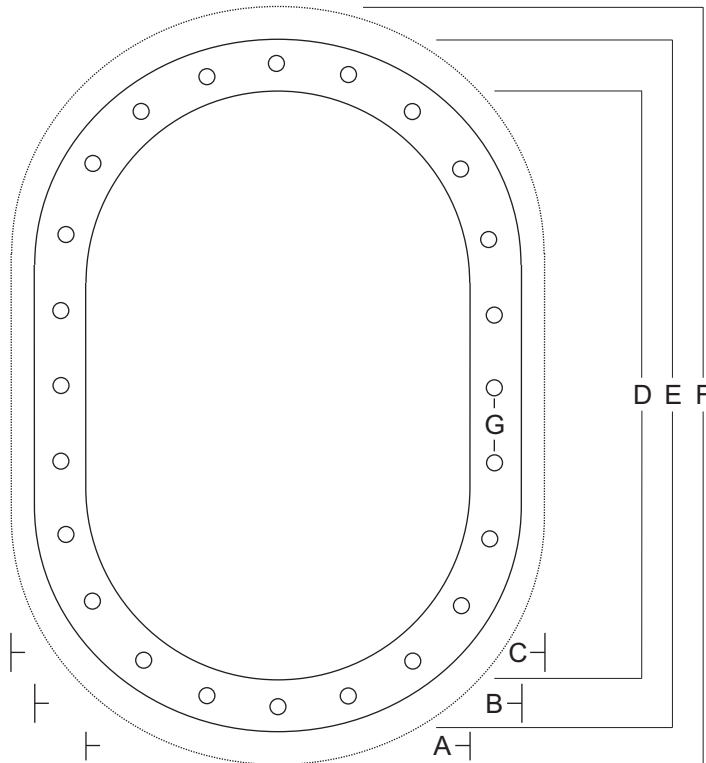


# Valley Nut and Bolt Co.

10111 Tilley Road South, Olympia, WA 98512-9143  
 800 562 8968 | 360 754 4877 | Fax: 360 357 9383  
 www.valleynutandbolt.com

# Flush Mount Oval Manhole Assembly

Plain view with bolting options. Not to scale. 08/2013



### Oval Standard Sizes\*

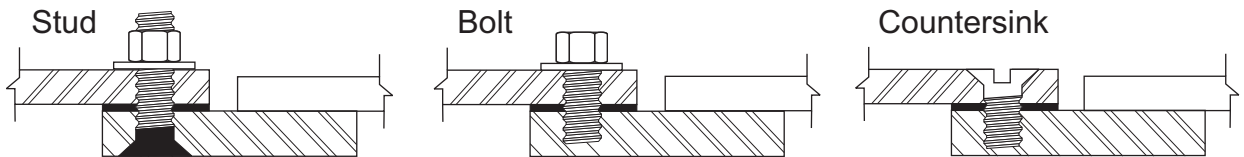
Interior		Exterior		Flush Mount	
A	D	B	E	C	F
15	23	19	27	21.50	29.50
18	24	22	28	24.50	30.50
18	30	22	34	24.50	36.50
20	34	24	38	26.50	40.50

Clear opening = Interior (A/D)  
 G - Evenly spaced mounting holes  
 (3-5/8" Max between holes)

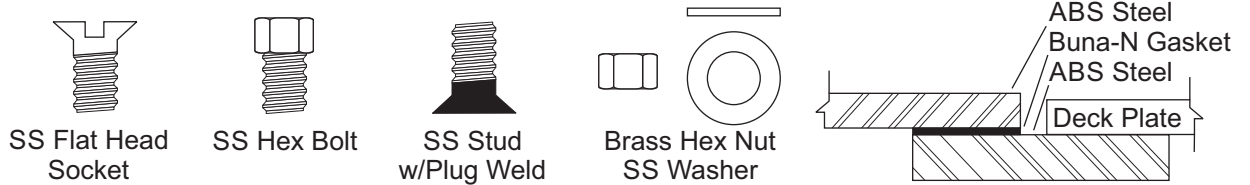
All dimensions in inches.

\*Custom sizes are available.

### Flush Mounting Options



### Mounting Materials



### Standard Options

Standard options include a stainless steel pipe fitting for the cover and a drop flop handle. Contact us for custom options.

Drop Flop Handle

1/2" dia. SS Round Bar  
 1/2" sch 80 SS Pipe

